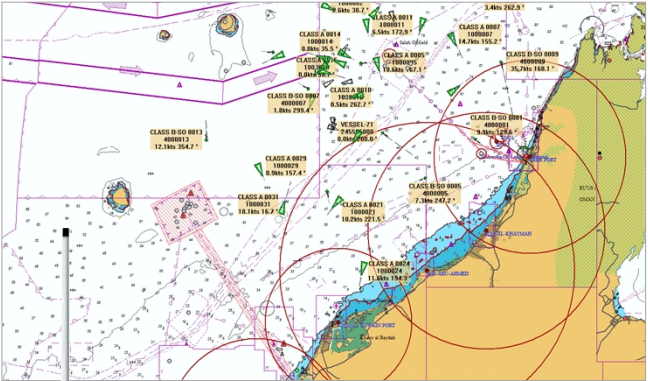


AIS AtoN SERIES (Type I)

NAN-1000/2000/4000/5000

- Dual functions: Real and Virtual AtoN
- Each transmits for up to 50 virtual AtoN
- TX power up to 12.5W, wide coverage
- Very low power consumption
- Compact design, maintenance-free



NAN-1000



NAN-2000



NAN-4000



NAN-5000

| Model No. | Shape | Output Power | GPS Antenna | VHF Antenna | Power Supply |
|-----------|-------------|--------------|-------------|-------------|--------------|
| NAN-1000 | Radome Type | 12.5 W | Inside | Inside | 12~18 V |
| NAN-2000 | UFO Type | 12.5 W | Inside | Separate | 12~18 V |
| NAN-4000 | Pole Type | 2.0 W | Inside | Outside | 12~18 V |
| NAN-5000 | Box Type | 12.5 W | Separate | Separate | 12~18 V |



FEATURES

- AIS AtoN station is used for light monitoring from AtoN administration. AIS AtoN station's transmission can be received by shipborne AIS to learn the position & status of the AtoN.
- As Type I defined by IALA, NAN-X000 is specially designed to be used for buoys, which carries limited batteries to supply any additional electronic equipment.
- NAN-X000 can be used for below applications:
 - AtoN in River or at Sea
 - Offshore and oil platform
 - Oceanic buoys
 - Electronic fence in water
 - Offshore wind farm
 - Electronic passage by bridge
- NAN-X000 is designed to transmit messages both for real and virtual AIS AtoN. For example, NAN-X000 can be used by harbor authority to establish virtual AIS AtoN channel. When shipborne AIS receives those transmissions, a series of AtoN symbols will be displayed on electronic chart.
- NAN-X000 conforms to the international standards such as IALA A-126, IEC 62320-2, ITU-R M.1371-5 and IEC 60945.

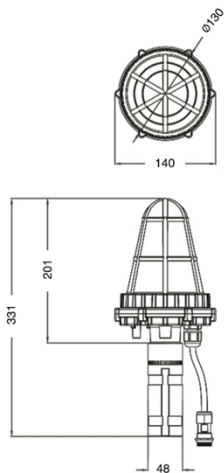
SPECIFICATIONS

- | | |
|--------------------------|---|
| ● TX Frequencies: | AIS 1, AIS 2 |
| ● Communication Mode: | FATDMA, RATDMA |
| ● Message Type: | MSG 6, MSG 21 (default) |
| ● TX Interval: | 3~60 minutes (to be configured) |
| ● TX Power: | 12.5 W (NAN-1000/2000/5000) 2 W (NAN-4000) |
| ● Power Consumption: | ≤40 mA (12V) |
| ● Interface: | RS232, NMEA 0183 |
| ● Operating Temperature: | -15°C~+55°C |
| ● Power Supply: | Nominal DC 12V (range 12~18V) |
| ● IP grade: | IP 66 |

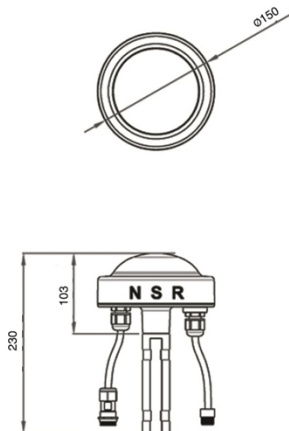


SIZE DIMENSION

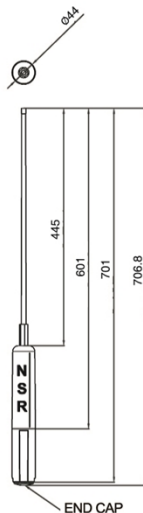
NAN-1000



NAN-2000



NAN-4000



NAN-5000

